

# HAEMATOLOGY ANALYZER

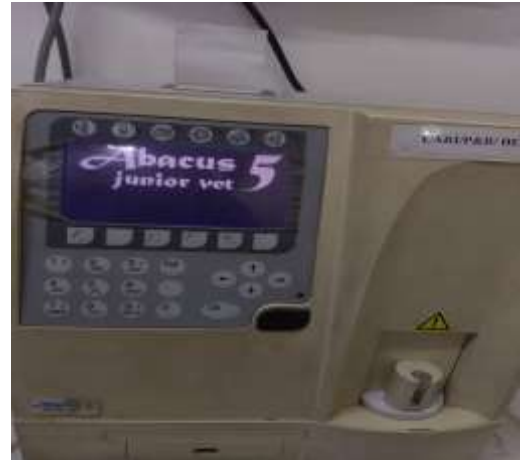
## Equipment /Instrument Details

**Make** : Diatron

**Model** : Abacus junior vet 5

### Important features

**Precise selection of different animal species and even human. Allows for the efficient estimation of all the haemogram and leukogram estimates including RBC width.**



### Specifications:

*Sample volume:* 25 µl whole blood (50 µl in Prediluted mode)

*Aperture diameter:* 80 µm (in one universal measuring chamber)

*Throughput:* approximately 22-28 tests/hour (3 parts) and 15-20 (5 parts).

Characteristics:	Accuracy max deviance from expected	Reproducibility (CV)	Carry over between samples	Test range
WBC (3 and 5 part)	3%	<3%	<1%	4.0 – 20.0x 10 <sup>9</sup> /l
RBC	3%	<3%	<1%	4.00 – 15.00x 10 <sup>12</sup> /l
HCT	3%	<3%	<1%	25.0 – 50.0 %
MCV	2%	<1%	NA	50 – 90 fl
HGB	2%	<2%	<1%	9 – 16 g/dl
PLT	4%	<4%	<3%	200 – 900x 10 <sup>9</sup> /l

*Sampling method:* Open tube system with automatic sample rotor and different tube adapters (fresh K3EDTA anti-coagulated whole blood samples).

*Sample types:* Dog, Cat, Horse, Mouse, Rat, Rabbit, Cattle, Monkey, Goat, Sheep, Ferret, Poultry\*. (\*measures except DLC).

### Usages

Estimation of leukogram and haemogram profile of various animal species

### Working Principles

It measures all the haemogram and leukogram estimates of blood sample. Upon subjecting the blood sample to the analyzer, the equipped reagent in the system lyses the red blood cells, which release haemoglobin and will be measured by cyanmethemoglobin method in 1:196 dilution aspect. Other haematological parameters will be then calculated accordingly.

### Application

Estimation of leukogram and haemogram profile of various animal species

## User instructions (including sampling instructions)

### Operating protocol:

- The blood samples to be analyzed should be collected in EDTA (3 mg/ml of blood) coated tubes. Don't use to blood collected using other anticoagulants in this analyzer.
- Always use new EDTA coated vials of 5 or 6 ml capacity for estimation.
- Use freshly collected blood samples for analysis.
- The sample volume should be around 2 ml and mix the sample properly with cap removed before placing it the sample rotor.
- Avoid use of stored blood samples.
- Never use fully or partially coagulated blood samples.

**Suggested charges including GST** (rates (Rs.) are subjective to changes as per the cost of chemicals, taxes, etc.)

S.No.	Type of Analysis	Industry	University	ICAR Institutes	Other	Unit
1	Haematological attributes	250	200	200	250	Per Sample

### Contact Person

**Dr. Jag Mohan**

Phone No.: 0581-2303223

Email ID: [mohanjagjag@rediffmail.com](mailto:mohanjagjag@rediffmail.com)

The Demand Draft should be in favour of "The Director, CARI, Bareilly (UP)"  
Letter, DD & Samples may be sent to "The Director, CARI, Bareilly (UP)-243122"

**Kindly include this note in your requesting letter exactly as it is:**

**"Content of this report/bill is meant for our information only and we will not use the content of this report for advertisement, evidence, litigation or quote as certificate to third party"**